

CHIAROSCURO // 09-26-2025

Between shadow and light, the space is transformed.
The creations of **William Guillon, Rémy Allamand, and Gibus** brush past, echo, and challenge each other.
In this chiaroscuro, materials ignite, shapes emerge, lines fade to be reborn in a new way.

Each work becomes a glow in the night, an incandescent whisper, a fragile trace...
A journey where the darkness reveals more than it conceals.

An exhibition curated by Antoine Vignault featuring an exclusive selection of contemporary furniture and
20th-century design pieces selected by Emmanuelle Vidal.

From September 26 to November 15, 2025, 2 PLACE MONTOULIEU, TOULOUSE – FRANCE
Wednesday to Saturday, 10:00 a.m. to 12:00 p.m. and 2:00 p.m. to 8:00 p.m., or by appointment.

OΔK









ΟΔΚ



From a childhood steeped in the landscapes of southwest France, to the world of dance and then Parisian fashion, creativity has always been a part of Remy Allamand's life. Today, he expresses himself with his hands through sculpted pieces. Series inspired by nature, such as Cliffs, a raw creation depicting the cliffs of the Spanish Basque coast. Flat tints, furrows, cracks.

The force of the marine element altering the rock, expressed through this deep and dense black. Repeated moving elements, imperceptible or violent, leave traces and sculpt the landscape and our lives. But also landscapes that nature has ceded to man. An urban landscape with architecture punctuated by diverse decors, all stemming from a primary element, the intrinsic element of every building: brick.

Suddenly, the bricks abandon their original function and emerge on the surface like forgotten and sacred relics. They punctuate the wall, sometimes taking on a raw appearance, sometimes more defined forms, inspired by the architecture of places of worship. His materials: clay, hemp, and lime. These natural and sustainable materials offer infinite artistic possibilities and allow for the experience of volume and the work of textures.

Today, the artist has decided to explore 3D and is part of the search for function through the creation of lighting fixtures. Nature and culture are two starting points for the artist. Highlighting the hidden and indispensable element. Revealing the substance in form. The long-awaited opportunity lies in the sensory approach, which contributes to learning about the sensory world and connecting with our environment.

REMY ALLAMAND

"For this series entitled Peregrinations, the idea was to transcribe memories of walks and visits to places in the south of France. A universe where the expression of these sometimes vague memories blends with romanticized images expressed through muted tones. A precise moment when it is no longer day but not yet quite night. Between dream and reality."

Remy Allamand



CYPRES I – PÉRÉGRINATION
Remy Allamand - 2025 - H 185 W 135 D 3 cm
Inks, walnut stain and acrylic paint

Gallery Price : € 5 800



LE PIGEONNIER – PÉRÉGRINATION
Remy Allamand - 2025 - H 92 W 65 D 3 cm
Inks, walnut stain and acrylic paint

Gallery Price : € 2 500



CYPRES II – PÉRÉGRINATION
Remy Allamand - 2025 - H 92 W 65 D 3 cm
Inks, walnut stain and acrylic paint

Gallery Price : € 2 500



LA CHAPELLE – PÉRÉGRINATION
Remy Allamand - 2025 - H 116 W 95 D 3 cm
Inks, walnut stain and acrylic paint

Gallery Price : € 4 000





William Guillon is a French Designer and Artistic Director based in Bordeaux, specializing in collectible lighting and accessories. Unconventional beauty is an obsession that influences his expression and translates into radical and organic creations.

His aesthetic is based on an innovative exploration of traditional craftsmanship that pushes the boundaries of materials while maintaining a strange elegance. Each work created by William Guillon is handmade in France; they are unique or numbered pieces in limited editions. His preferred material is cast bronze. He works with different types of bronze, particularly a rare alloy called white bronze, which has the particularity of being silvery in color.

Since launching his studio in 2014, he has been recognized for several collections of functional sculptures and also works on custom projects. His works are exhibited and distributed in various galleries and showrooms around the world (Toulouse, Paris, Gstaad, Brussels, New York, Los Angeles, Dallas, Chicago, Shanghai) and have attracted the attention of publications such as AD, Vogue, Interior Design, Dezeen, Elle Decoration, Côté Ouest... In January 2022, William Guillon was selected among the 100 best designers promoting French design in the world by the VIA with the FD100 selection.



DÉSENCHANTÉE TABLE
William Guillon - P.U. 2024 - H 78 W 115 D 115 cm
Bronze patina and burnt wood table.

Gallery Price : € 22 000



IN MEMORIA
William Guillon - P.U. 2024 - H 78 W 115 D 115 cm
Chaise revêtue de satin et bronze original patiné.

Gallery Price : € 5 000

WILLIAM GUILLON

"Nothing makes sense anymore, nothing works anymore, everything is chaos."

These haunting lyrics from «Désenchantée» by French artist Mylène Farmer perfectly sum up the emotion I wanted to convey through this collection. It embodies a profound sense of decline, as if the world were unraveling, hanging by a fragile thread, a vision of faded glory and inevitable collapse.

The result evokes the feeling of an artifact that has spanned countless lives, unearthed from the ashes of forgotten eras. The bronze feet, as always hand-sculpted, are enhanced with a delicate gradient that gives the illusion of floating, infusing the piece with palpable tension. Together, these elements transform the object into a visceral testament to the impermanence of all things."

William Guillon



LV 426 FLOORLAMP
William Guillon - P.U. 2024 - H 225 W 30 D 30 cm
Lampadaire en bronze patiné et porcelaine.

Gallery Price : € 15 000



LV 426 BALANCED
William Guillon - P.U. 2022 - H 135 W 80 D 80 cm
Suspension en bronze patiné et porcelaine.

Gallery Price : € 15 000



Gibus, aka Jean-Baptiste Boutin, is a self-taught sculptor trained in graphic arts and communication. After a career as an art director in advertising, he embarked on a world tour, searching for what he lacked to fulfill himself as an artist. He returned enriched by encounters and experiences, as he should be, and with the beginnings of an answer in the form of a growing desire. A desire for wood and hands. From the different species he works with, he extracts the truth of the forms found within.

Pure, simple, and precise forms. Gibus creates striking works whose lightness contrasts with the density of the subject. Like a philosophical gesture, his art questions human beings about their own existence, allowing the material to express its truth.

All of his wooden works are and remain unique pieces that will not be reproduced.

GIBUS

«Follow me because I don't know where I'm going.»

The years could have given me a precise direction, which I would have enjoyed explaining here, but I have to admit that I let my work drift according to what my capricious brain dictates. I believe that being an artist means accepting the responsibility of showing a new point of view on any subject. A point of view that can be mawkish, poetic, funny, uncomfortable, harsh, or revolting.

The artist is responsible for what they create, not for what they make others feel or think. That is their freedom, and it is thanks to it that they can continue.

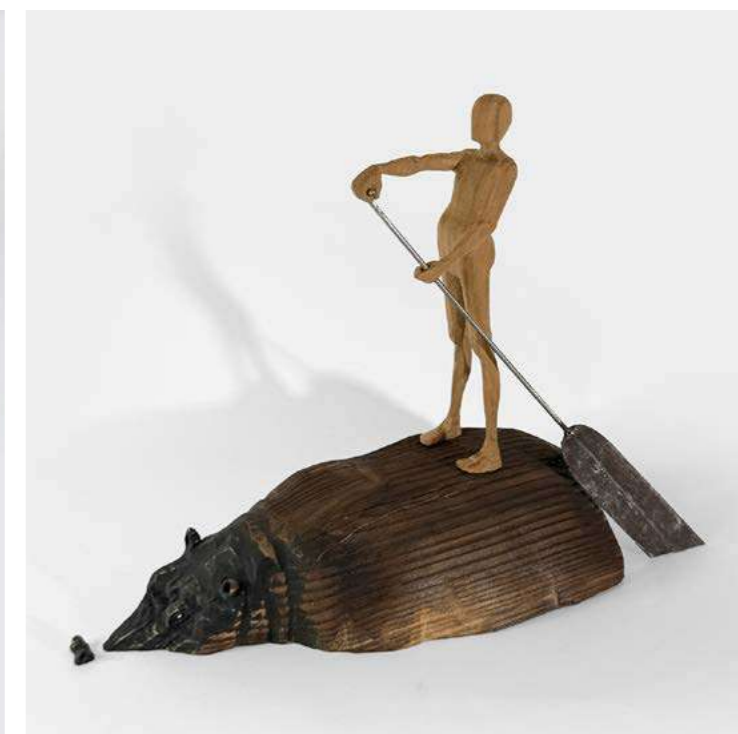
This work can only be done by drawing inspiration from life, with complete indocility and a constant effort of lucidity. Complacency is the enemy.

Gibus



CATHARSIS
Gibus - P.U. 2023 - H 30 W 26 D 8 cm
Sculpture in pine and burnt maple wood.

Gallery Price : € 1 800



LA SÉRÉNITÉ
Gibus - P.U. 2025 - H 32 W 28 D 16 cm
Sculpture in wood and steel

Gallery Price : € 2 100



LA LIMITE
Gibus - P.U. 2023 - H 57 W 26 D 6 cm
Sculpture in apple wood and ebony.

Gallery Price : € 2 100



LA CULPABILITÉ
Gibus - P.U. 2025 - H 26 W 24 D 10 cm
Cedar wood sculpture.

Gallery Price : € 1 800

OAK

The OAK Gallery is the new landmark for art and design collectors in Southern France.

OAK Oneofakind Gallery is located at 2 Place Montoulieu in Toulouse, in the former kitchens of a listed 14th-century residence. This new location is a showcase for inspiring displays featuring works of art selected by Antoine Vignault and pieces from the 1950s, 1960s, and 1970s, patiently sourced by Emmanuelle Vidal.

Brought together by their shared passion for collectible design and unique pieces, Emmanuelle Vidal and Antoine Vignault have been exhibiting

their work since 2020 in a magnificent apartment opposite the Jardin des Plantes. Since last March, they have been presenting their selections in a new 80m² showroom on Place Montoulieu, where all the art and design pieces are staged and offered for sale. These rare, often unique, objects are presented during thematic exhibitions that highlight artists from all walks of life. The decor is constantly evolving, according to their discoveries and the favorites of customers, more and more of whom are discovering this new address.

